



In one of the most important economy sectors, Petrotec Group is one of its greatest references, due to the fact that it is one of the five largest manufacturers of the world, concerning the production of equipments to the oil industry distribution and retail, and the only one offering global solutions.

It has achieved its status and prestige on its own with no further than two decades of activity. With more than four hundred collaborators and several branches operating in four continents, Petrotec Group has been standing out not only due to its dynamics in a sector which is known by its high competitiveness, but also by the high satisfaction of its clients.

Petrotec Group is proud of belonging, for more than a decade, to the restrict group of manufacturers whose technology is 100 per cent their own, which reflects the technology potential of its research and development departments. It is also important to refer that all the activities are certificated according to the ISO 9001 and ISO 14001 standards.

Petrotec Group's current activity consists of fuel and LPG pumps production, research and development of hardware and software solutions, especially conceived or adapted to each client's specific needs, management and control systems in filling stations, car wash equipments, solutions for garages and maintenance services.

The largest oil companies of the world are some of Petrotec Group's clients, which has brought to it great pride and prestige. The aims are not only to consolidate but mainly to strengthen the already excellent position Petrotec Group occupies in the market. Thus it is trying to enlarge the distribution network as well as to develop partnerships in new markets.



EURO 5000 VI

STANDARD SPECIFICATIONS

Construction:

Frame: Galvanised carbon steel; double coated painting
Housing: Stainless steel (AISI 316)
Panels: Aluminium; double coated painting

Suction pump:

Monoblock, with gas separator and non-return valve

Meter:

Double-action positive displacement
Volume meter with 4 pistons
Accuracy: ± 0,2%

Filter:

Stainless steel, reusable, 100µm mesh filter easy to clean

Motor:

Eexd Motor single or three phase, 50/60 Hz with built in thermal protection

Calculator:

CEM or DISCO

Protocols:

Petrotec, Pulse Interface, IFSF-LON, ER3, G, Others

Hose:

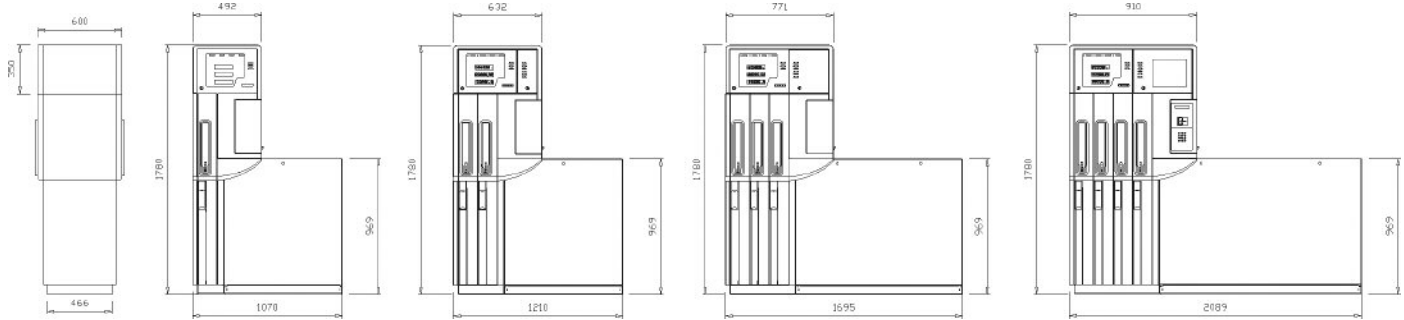
5/8", 3/4", and 1" or according to EN 1360 with textile reinforcement

Nozzle:

Automatic nozzle ZVA slimline

OPTIONS:

- DISPENSER / SUBMERGE
- 90 OR 130 L/MINUTE FLOW RATE
- SPEED SELECTION (50/90 L)
- SINGLEPHASE SUPPLY
- VOLUME OR PRICE PRESETTING
- SIGHT GLASS
- BREAKAWAY IN THE NOZZLE OR HOSE
- COLOUR HOSES AND SLEEVES
- CUSTOMISED PAINTED PANELS
- INTERFACES TO OTHER EQUIPMENT
- SATELLITE
- CIRCUIT BREAKERS IN THE EQUIPMENT
- VAPOUR RECOVERY
- VAPOUR RECOVERY MONITORING SYSTEM
- FLEXIBLE PIPE
- ELECTRONICS HEATER
- VOICE MODULE
- FOUNDATIONS FRAME
- MULTIMEDIA OPT (FROM 4 PRODUCTS)
- TAG READER



Weight:
195kg to 800Kg

MOD. BS5000V13 07_2006



Parque Industrial de Guimarães - Pav. C2, Ponte I 4800-493 Guimarães - Portugal
P. (+351) 253 479 300 F. (+351) 253 479 318
isd@petrotec.pt | www.petrotec.pt



C.E.C.O.D.
COMITÉ DE EUROPEAN MANUFACTURERS
OF PETROLEUM MEASURING AND DISTRIBUTION EQUIPMENT



Petrotec is continuously improving its products. Changes on the specifications may occur without prior notice.

PETROTEC MARKETING TEAM 2006



RETAIL LINE EURO 5000 VI

In the fuel retail either attended or self-service mode, EURO 5000 VI combines some advantages, like flexibility and precision, in an attractive and compact design, with the space optimization of the pump and a complete offer of different types of fuel together with multimedia OPT.



Petrotec

EURO 5000 VI

In a market whose main characteristics are the extreme competitiveness and demand, excellence is not a mere luxury, but an obligation. It was in this context that the new Petrotec Euro 5000 VI series was born.

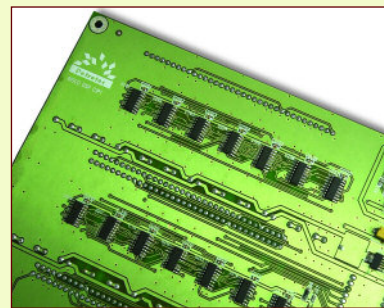
The production of Euro 5000 VI lies in a modular multiproduct concept, which allows the distribution of up to five types of fuel per refuelling position. The pump controller is highly precise and allows a clear visualization. An automatic system of hoses retraction is integrated in the pump and provides that the hoses are safely stored after usage. This way the process is more attractive to the customers.

Due to its several characteristics, Euro 5000 VI series satisfies the oil companies needs. It was conceived in order to obey the most demanding international standards. Therefore it has the advantage of being able to operate in any market according to the highest quality and technological patterns, concerning not only the materials used but also the manufacturing process.

This wide range of characteristics allows Euro 5000 VI series to have a longer life cycle, and consequently a higher profitability to the business. The internal organs disposition was made aiming the effectiveness, by allowing quick servicing.

However, the highest quality manufacture standards can be also seen on the outside, since the Euro 5000 VI series technology is protected by a hermetic stainless steel outer covering, which guarantees its performance against the hardest environmental conditions.

- Excellent price/quality relation;
- Extraordinary reliability of its components;
- High quality manufacture standards;
- High flow rate levels;
- Modern and attractive design.



CEM or DISCO Calculator

The Calculator is the electronic heart of VI series retail line pumps. Due to its modular conception and high industrial technology, it achieves high levels of reliability and flexibility.

The software is conceived on IFSF data model and others, which allows its configuration and usage in every country.

- It controls 2 filling positions up to 4 displays;
- It controls up to 10 hoses and 5 products;
- Value or volume presetting 5-key keyboard (numerical 12-key keyboard optional);
- Configuration from console or presetting keyboard;
- Electronic and electromechanical totalizer for each hose;
- Monitoring of motor thermal protection and valve operation;
- Internal self-diagnosis;
- Data retention in EPROM for security.

TECHNICAL SPECIFICATIONS

- Numerical LCD Displays, with high contrast 1" digits
- Back-lightened Displays, visible from all angles
- Independent visualization Displays, for easier reading

Number of digits

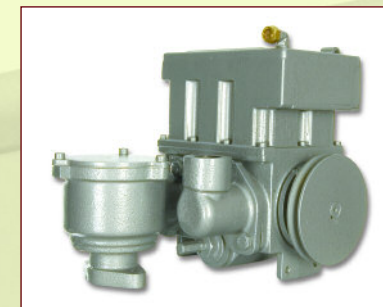
- Total: 6 digits (8 as optional)
- Volume: 6 digits
- Unit Price: 4 digits

ELECTRONICS

- Voice module (optional);
- Electronics heating with thermostat (optional);
- Price programming through physical key;
- Ability to operate in stand-alone and/or self-service, connected to the filling station managing system (Genesys, Eurosyst or others);
- Backup battery.

OPT - Multimedia Outdoor payment terminal

- The DIT (Dispenser Integrated Terminal) can be integrated in one or two sides of the pump, allowing a quicker operation at the station when it is connected to a system (Genesys);
- Intuitive and userfriendly interface;
- It allows customised graphic interface of Multimedia payment terminals with specific advertisement at client's request;
- It has the most recent communication and data security technologies;
- Also in OPT Genesys 21 pedestal version (Island terminal).



SUCTION PUMP

- Monoblock fuel pump developed and produced by Petrotec, "RTF" model, of positive-displacement, high robustness;
- Integrated gas separator;
- Non-return valve integrated in the outlet;
- Bypass adjustable up to 3,5 bar;
- Pump activated by a pulley and Vbelt, temperature and hydrocarbonates proof, as well as by a flame proof electric motor;
- Tri-phase or single-phase connection, of 50 or 60 Hz;
- Stainless steel reusable 100µm suction filter;
- Ability to prime, with connection to the mechanical installation in 1 1/2" through a 400mm flexible pipe, or rigid pipes in dispenser case.

TECHNICAL SPECIFICATIONS

- Maximum flow rate: 50/90/130 L/Minute
- Minimum flow rate: 5 L/Minute
- Pump speed: 900/1470 r.p.m.
- Electric motor: 0.75/2.2 KW
- Pressure: 1.3/2.1/3 bar

METER

- Petrotec Meter, PTF25-80 model, per hose;
- The most reliable and the safest in the market, with decades of experience and high measuring accuracy, about ± 0,2%, which is possible only to the 4 pistons meters;
- Positive-displacement meter, which assures, even in great streams, a continuous checking through the years.

TECHNICAL SPECIFICATIONS

- Precision: ± 0,2%
- Maximum pressure: 3 bar
- Maximum flow rate: 130 L/Minute
- Minimum flow rate: 2.5 L/Minute
- Volume per revolution: 0.5 L