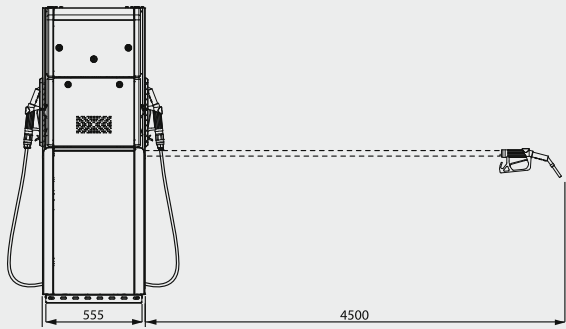
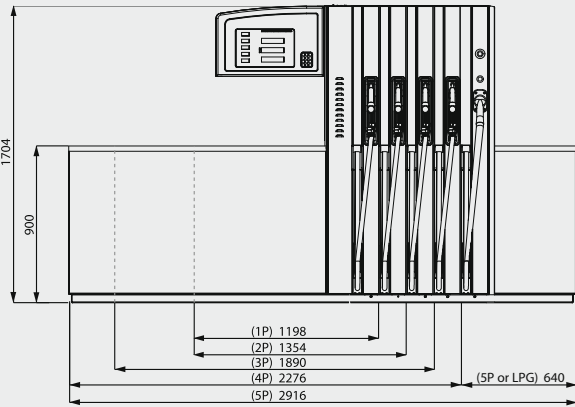


STANDARD SPECIFICATIONS

CONSTRUCTION	Frame: Galvanised carbon steel; double coated painting. Housing: Stainless steel. Panels: Aluminium; double coated painting.
SUCTION PUMP	Monoblock Petrotec RTF.
METER	Positive displacement, Petrotec PTF 25-80 4 Pistons Volume Meter. Accuracy: ±0,2%.
FILTER	Stainless steel, reusable, 100 µm mesh filter easy to clean.
MOTOR	Eexd Motor single or three phase, 50/60 Hz with built in thermal protection.
CALCULATOR	eMC.
PULSER	Petrotec ED03.
HOSE	5/8", 3/4," and 1" or according to EN 1360 with textile reinforcement. Up to 4,5 m usable length.
NOZZLE	Automatic ZVA2 nozzle or others.
CERTIFICATES	ATEX Approval: LOM 09 ATEX 2075. MID Approval: NMi T10237 (Liquid Fuel Dispensers). MID Approval: NMi T10123 (LPG Dispensers). MID Approval: NMi T10092 (AdBlue Dispensers). In accordance with ISO 9001, ISO 14001 and OHSAS18001 standards.
FUEL TYPES	Petrol • Diesel • BioDiesel • Biodiesel Blends • Ethanol (E85) AdBlue • LPG

OPTIONS

- Dispenser/Submerge
- 90 or 130 L/Minute Flow Rate
- Speed Selection (50/90 L/Minute)
- Satellite
- Single Phase Supply
- Volume or Price Presetting
- Sight Glass in Hose
- Breakaway in the Nozzle
- Colour Hoses and Sleeves
- Petrotec eMC Electronic Vapour Recovery
- Vapour Recovery Monitoring System
- Vapour Recovery Status Indicator
- Flexible Pipe
- Electronics Heater
- Voice Module
- Interfaces to Other Equipment
- Foundation Frame
- EMV/PCI Multimedia OPT
- OPT Lamps
- Tag Reader
- Main Safety Switch
- Unit Price Display per Product
- Low Temperature Kit
- Fire and Tilt Detection
- Customised Painted Panels
- Protocol Petrotec/EPS 5
- Protocol HDX
- Protocol HDX 485
- Protocol IFSF LON
- Pulse Interface



MOD.IBP5000-I 2.05.2010



ADD VALUE TO YOUR FORECOURT
AND ATTRACT NEW CUSTOMERS
WITH P5000 TECHNOLOGY!

Designed for fuel retail, either attended or self-service mode,
the new Progress Line P5000-I multiproduct dispenser,
combines advantages like flexibility and precision
together with the new multifunctional
and multimedia OPT.



HEADQUARTERS
Parque Industrial da Ponte, Pav. C2
4805-661 Guimarães - Portugal
T: (+351) 253 479 300 · F: (+351) 253 479 318
hq@petrotec.pt | www.petrotec.eu





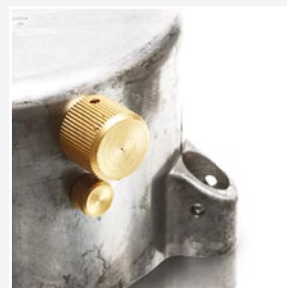
Petrotec Group is one of the five largest manufacturers of the world concerning the equipment for the oil industry's distribution and retail. With 100% technology of its own it is the only one offering global solutions, specifically developed for each client's needs.

- **Integrated Solutions:** Dispensers, Systems and Carwash;
- **High Quality & HSE Standards;**
- **The Best Time to Market;**
- **Extensive and Multi-Skilled Worldwide Network;**
- **Unmatched Customer Service: We Make it Personal!**



ELECTRONICS

The eMC calculator is the electronic heart of Progress Line P5000-I retail dispensers. Due to its high industrial technology, it achieves high levels of reliability and flexibility.



HYDRAULICS

It contains up to five hydraulics circuits comprising the electrical driven pumping/ meter unit integrating a pulse generator, electrical flow control valves, junction boxes, pipes and coupling assemblies. Optionally, it is fitted with Vapour Recovering.

Petrotec's 4 pistons PTF25-80 is the most reliable and safest meter in the market, with decades of experience and high measuring accuracy, about $\pm 0,2\%$.

MULTIMEDIA OPT

The new state of the art in pump multimedia OPT can be connected to all "IFSF" self-service systems. Embracing EMV/PCI, EPS interface and "AVR" integration, this outdoor payment solution is configured as unattended POS and connected to LON network. Presenting a multimedia 12" transreflexive LCD and alarm generation, it allows stand alone operations and includes several peripherals such as:

- Barcode Reader
- Touch Screen
- Contactless EMV Card Reader.

There is also the possibility to customize the OPT, according to local requirements, with the integration of different hardware and software solutions.

IDEALLY SUITED FOR ANY FORECOURT

COST-EFFECTIVELY

EASY MAINTENANCE

HIGH FLOW RATES

WIDE RANGE OF CONFIGURATIONS

DURABLE CONSTRUCTION

ORIGINAL DESIGN

Reach your final user through an attractive and functional image!

The new Petrotec Progress Line P5000-I is conceived in order to supply liquid fuels (gasoline, diesel, biodiesel, biodiesel blends and high ethanol blends), liquefied petroleum gas (LPG) and AdBlue. Its production lies in a modular concept which allows the distribution up to five types of fuel, per refuelling position. The pump controller is highly precise and enables a clear visualization. An automatic hoses retraction system is integrated in the dispenser and provides a safe storage after usage.

Its wide range of characteristics allows Progress Line P5000-I to have a longer life cycle and consequently a higher profitability to the business. The internal components' configuration was made aiming the effectiveness. Its structure is protected by a hermetic stainless steel outer covering, which guarantees its performance against the hardest environmental conditions.

Petrotec Progress Line P5000-I satisfies the most demanding oil companies' needs and meets the advantage of being able to operate in any market, according to the highest quality and technological patterns.

